



East Palo Alto Visual Field Analysis

10/11/13

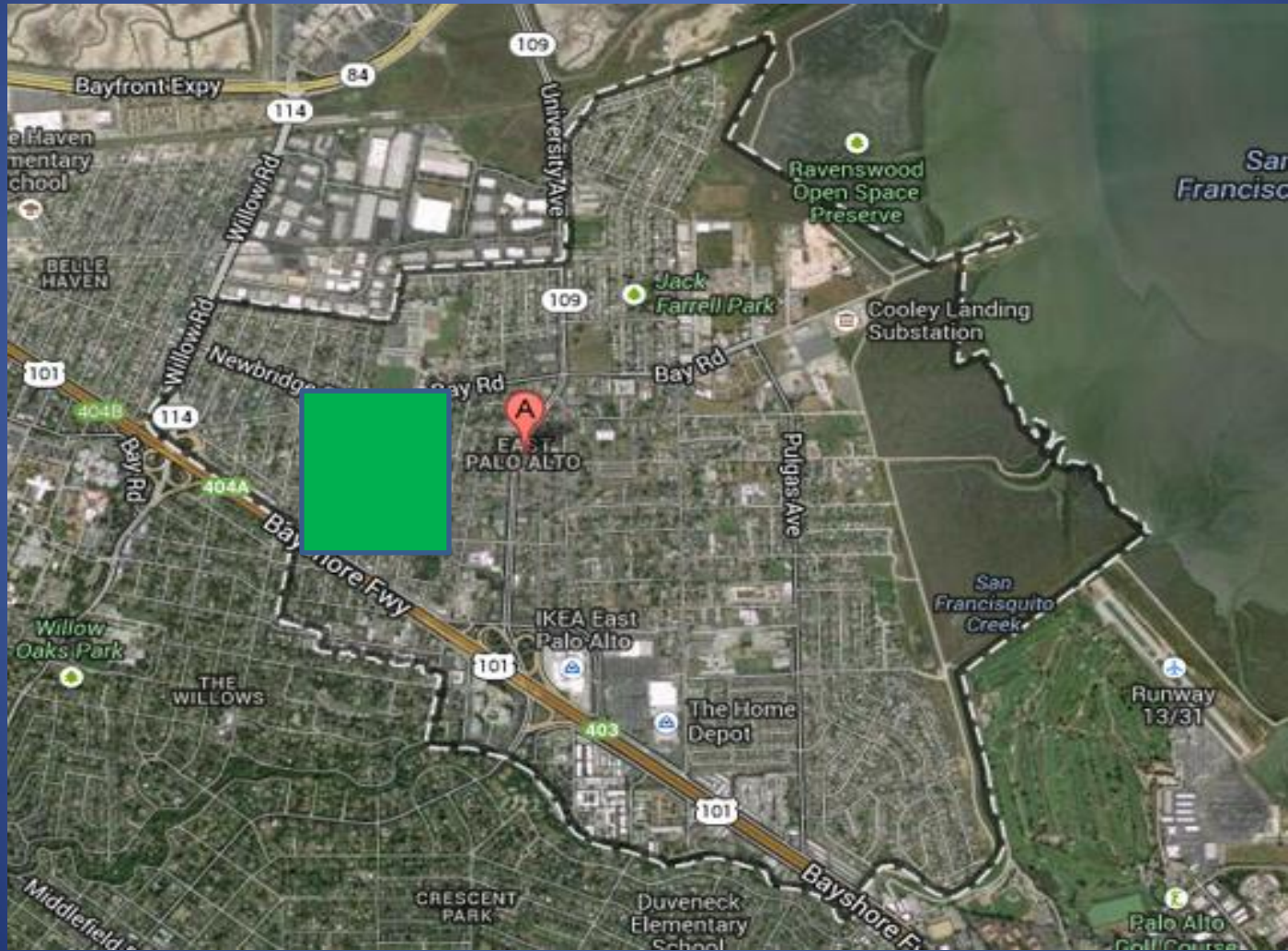
East Palo Alto Park Shortfall

- The Quimby Act (California Government Code 66477 (a)(4)) standard is 3 acres of parkland per 1,000 residents.
- East Palo Alto has 16 acres total, or about 18% of the total needed.
- East Palo Alto would need to add 72.5 acres (4.3% of the entire city) of parkland to meet the goal of 3 acres per thousand residents.
- This parkland shortfall indicates a need for more parks, open space, and recreational opportunities.

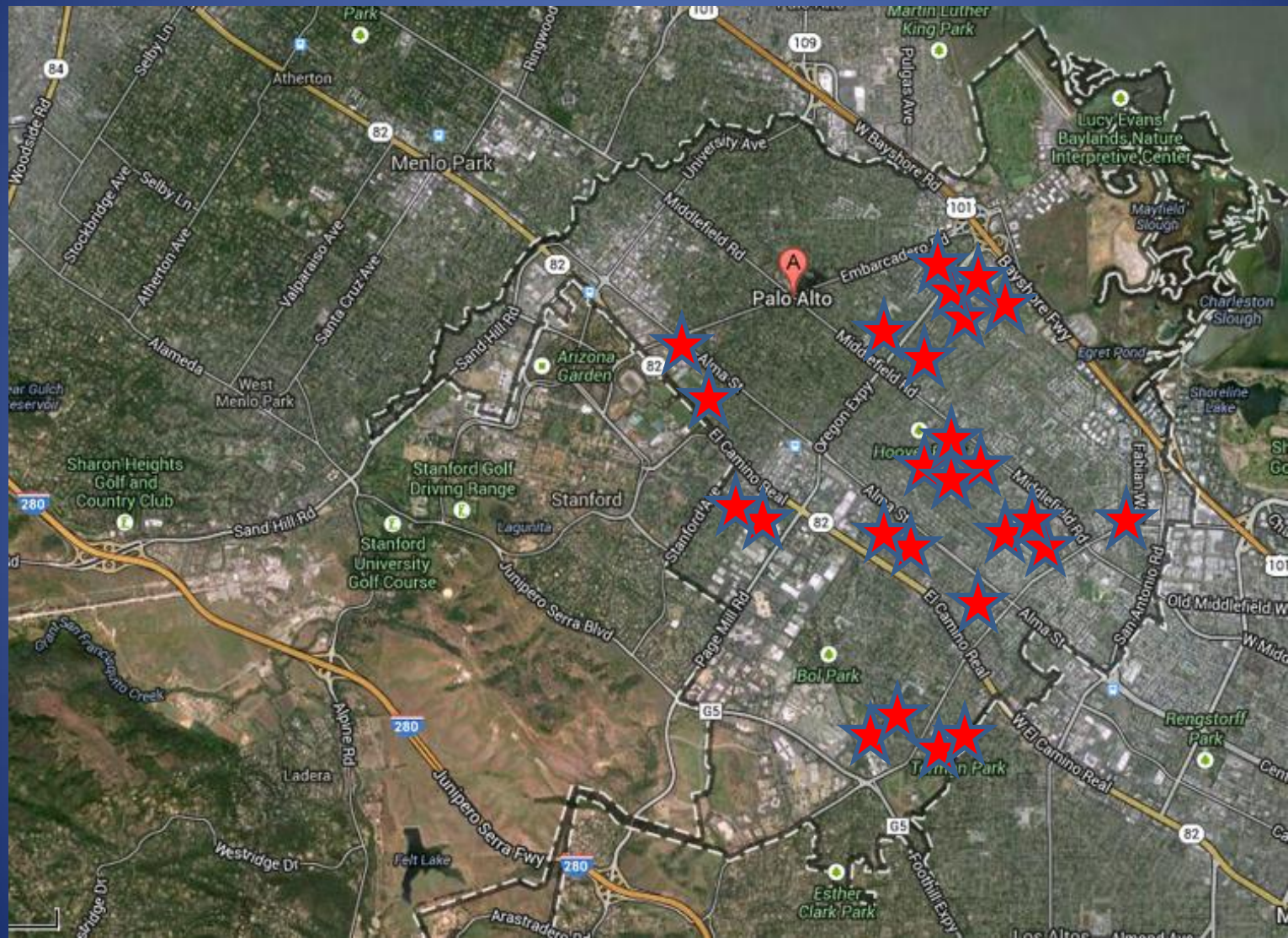
Source: East Palo Alto Bay Master Plan

Chapter 3 – East Palo Alto Demographic Profile & Parkland Deficit

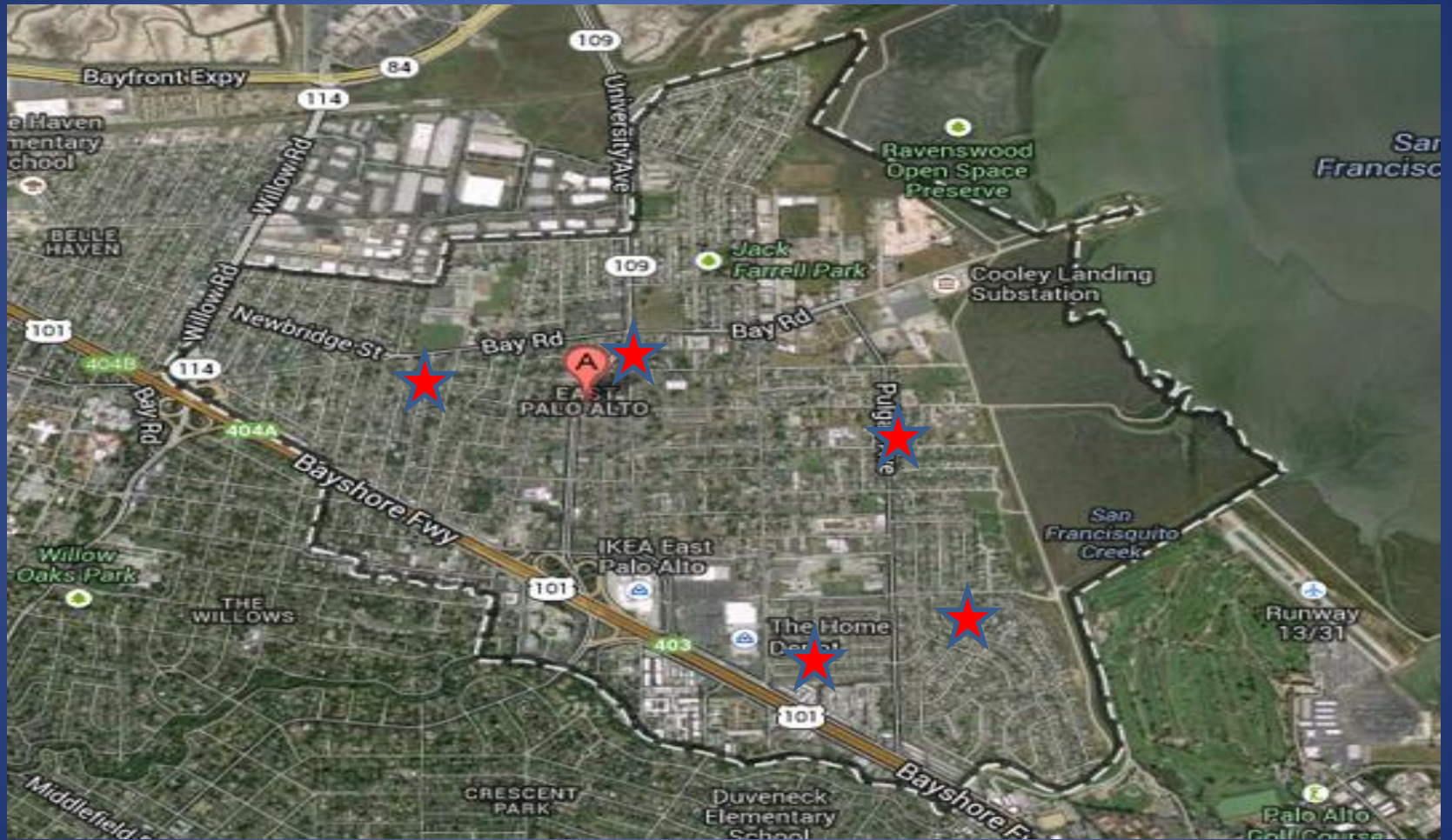
Visual Estimate - 72.5 Parkland Acres Needed



Palo Alto: 26 Full Sized Athletic Fields



East Palo Alto: 5 Full Sized Athletic Fields



East Palo Alto has 55% of the youth population of Palo Alto and only 19% of the athletic fields.

East Palo Alto Field #1: Cesar Chavez Elementary



“Best field in EPA...Heavily used.”

East Palo Alto Field #2: Costano School & 49er Academy



“Too small unless you use the baseball diamond.”

East Palo Alto Field #3: Charter School



“Too small...Poor Condition...Never go out there.”

East Palo Alto Field #4: Martin Luther King Park



“2nd best Field in EPA. A little bit too small, and sloped”

East Palo Alto Field #5: Ronald McNair Middle School



“Lights, barely wide enough, a little short. Poor Condition.”

**“We play soccer here...and we get hurt,
especially on the rocks.”**



Future Site of Rich May Field



Architects Rendering of Rich May Field



Every Dollar Makes A Difference

You can help build, maintain, and endow this new parkland for the next 100 years.

Donate today:

www.richmayfoundation.org

